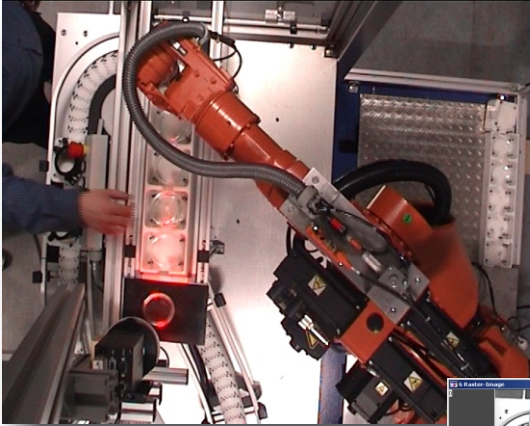


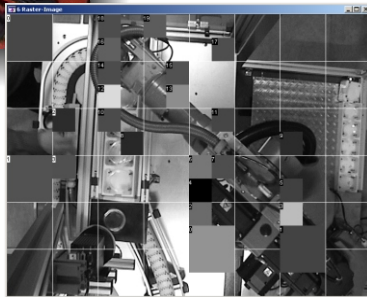
Industrial Image Processing

Application RIM (Roboter Integrated Mounting Cell):



roboter supervision for early detection of critical situations with IEEE1394-camera

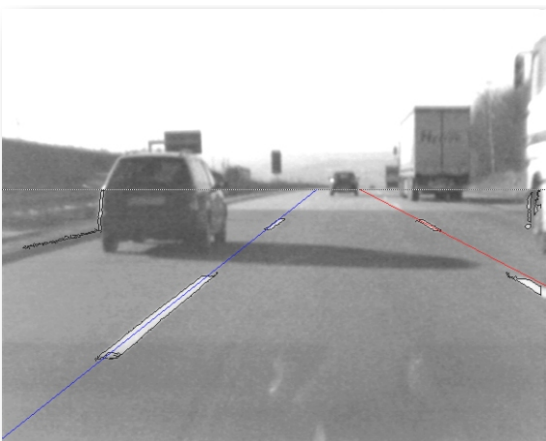
- intelligent image processing software for the process control and supervision
- image processing using of Firewire IEEE1394-cameras (no framegrabber required, only Firewire port)
- usage of inexpensive cameras possible (depending upon requirement - e. g. webcams for prototype - with up to 30 pictures per second)
- pixel manipulation and pattern matching
- objekt tracking
- bar code identification with camera or bar code reader



motion detection and object recognition with dynamic grid size

Application Lane Tracking:

object recognition, classification, tracking: recognition of lane markings and tracking of the lane by kalman filter structures in picture sequences



object recognition and grouping with orientation analysis



lane mark detection and prediction of the lane course

Cooperative Development by:

DOMEBA GbR
Engineering - Software - Consulting
Straße der Nationen 41a/b
D - 09111 Chemnitz
phone: +49 (0)371 4002080
fax: +49 (0)371 4002081
e-mail: info@domeba.de
Internet: www.domeba.de

Hiersemann
Prozessautomation GmbH
Neefestraße 88
D - 09116 Chemnitz
phone: +49 (0)371 40040-0
fax: +49 (0)371 40040-40
e-mail: info@hiersemann-chemnitz.de
Internet: www.hiersemann-chemnitz.de